

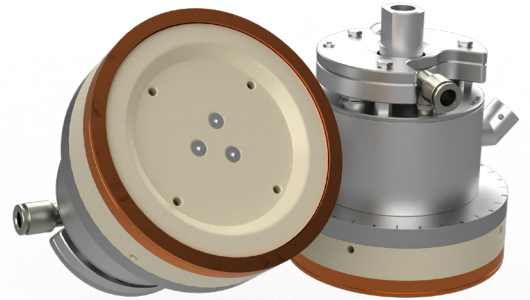
Technical Data Sheet

SRHS Rev02

Sealing Round-Heater Standard

Digital Heating System designed for sealing applications

cera2seal[®]



Parameters

Sealing Surface/Area ¹⁾

Sealing diameter	75 or 95 mm
Sealing width	5 mm
Profile	Flat
Materials used	Sealing surface: AlCu (2.0966) housing: stainless steel, PEEK cable gland: stainless steel

Connection Cable

Cable type	Hybrid cable (heater, control and communication cable integrated), cable sheathing: PUR
Connector type	Harting® Han 3A ¹⁾ , made of die-cast aluminum, powder-coated
Length	1.5 m (cable extension available separately)
Diameter	10.1 mm
Minimum bending radius	75 mm
Pin assignment	See appendix

Environmental Conditions

Ambient temperature	5 °C to 40 °C (41 °F to 104 °F)
Maximum relative air humidity	80 % at temperatures up to 31 °C (88 °F), decreasing linearly to 50 % relative humidity at 40 °C (104 °F)

Air Cooling ²⁾

Purity class (ISO 8573)	No restrictions
Pressure	0.5 bar recommended
Flow rate	Max. 20 l/min

Water Cooling ²⁾

Purity class	No restrictions
Pressure	0.5 bar recommended
Flow rate	Max. 3 l/min
Temperature	14...15 °C (59 °F)

Standards

Underwriters laboratories (UL)	untested
Ingress protection (IP)	Design according to IP65

Electrical Power

see appendix

Nominal Voltage

48 V DC
24...36 V DC possible, but with lower heating-performance

Sealing Temperature

Up to 250 °C (482 °F)

Temperature Accuracy

± 1 K

Nominal Heat Up Rate

10 K/s

Maximum Surface Pressure

2 MPa (on the sealing surface)

¹⁾ Customizing on request

²⁾ From 150 °C continuous operating temperature the cooling of the electronic housing is required (depending on environmental conditions).

watttron Inc.

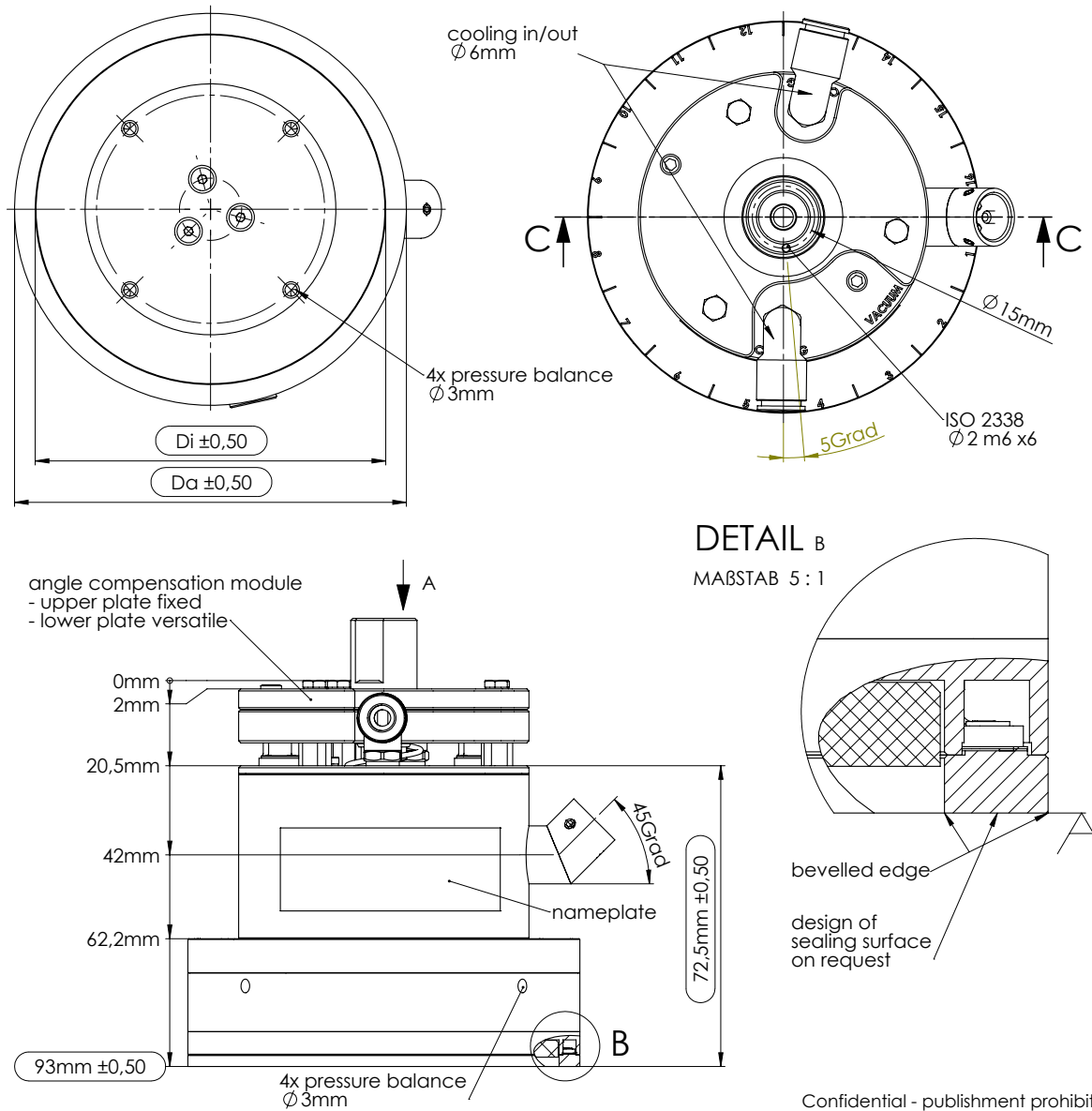
150 N Michigan Ave 35th Floor – Chicago, IL 60601

+1 (312) 665-0984

sales@watttron.com

www.watttron.com

Drawing

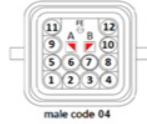


Confidential - publication prohibited!

Da (outer diameter sealing surface)	Di (inner diameter sealing surface)	Width of sealing-area	Total height	Maximal electrical power (48 V DC)	Nominal electrical power* (48 V DC)	Angle compensation
74.5 mm	64.5 mm	5.0 mm	93.0 mm	660 W	200 W	included
94.5 mm	84.5 mm			735 W	220 W	included

* Based on a typical application of sealing mono PP at 50 cycles per minute

Pin Assignment



HARTING Han® 3 A industrial plug (m)

Pin	Assignment
1	RS485 A D+ IN
2	RS485 B D- IN
5	+24V (controller voltage)
6	RS485 GND data
7	Positioning signal (POS)
10	+48V (heater power supply voltage)
11	GND (heater and controller voltage)
12	shield
PE	PE

Customization on request

- Sealing Profiles



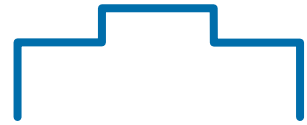
flat (standard)



curved



stepped



stepped

- Vacuum intake on the bottom side (to fix lids in the process).
- Different covers with/without lid protrusion.
- A system-specific connection piece can be purchased as an optional product.